



**REGIONAL SPECIALISED METEOROLOGICAL CENTRE-TROPICAL CYCLONES, NEW DELHI
TROPICAL WEATHER OUTLOOK**

DEMS-RSMC TROPICALCYCLONES NEW DELHI DATED 13.10.2022

TROPICAL WEATHER OUTLOOK FOR NORTH INDIAN OCEAN (THE BAY OF BENGAL OF BENGAL OF BENGAL AND ARABIAN SEA) VALID FOR NEXT 120 HOURS ISSUED AT 0600 UTC OF 13.10.2022 BASED ON 0300 UTC OF 13.10.2022.

BAY OF BENGAL:

YESTERDAY'S CYCLONIC CIRCULATION OVER NORTH ANDAMAN SEA & NEIGHBOURHOOD LAY OVER CENTRAL BAY OF BENGAL AND NEIGHBOURHOOD AT 0300 UTC OF TODAY, THE 13TH OCTOBER, 2022.

SCATTERED LOW AND MEDIUM CLOUDS WITH EMBEDDED ISOLATED MODERATE TO INTENSE CONVECTION LAY OVER CENTRAL BAY OF BENGAL & SOUTH BAY OF BENGAL AND SOUTH ANDAMAN SEA.

PROBABILITY OF CYCLOGENESIS (FORMATION OF DEPRESSION) DURING NEXT 120 HRS:

24 HOURS	24-48 HOURS	48-72 HOURS	72-96 HOURS	96-120 HOURS
NIL	NIL	NIL	NIL	NIL

ARABIAN SEA:

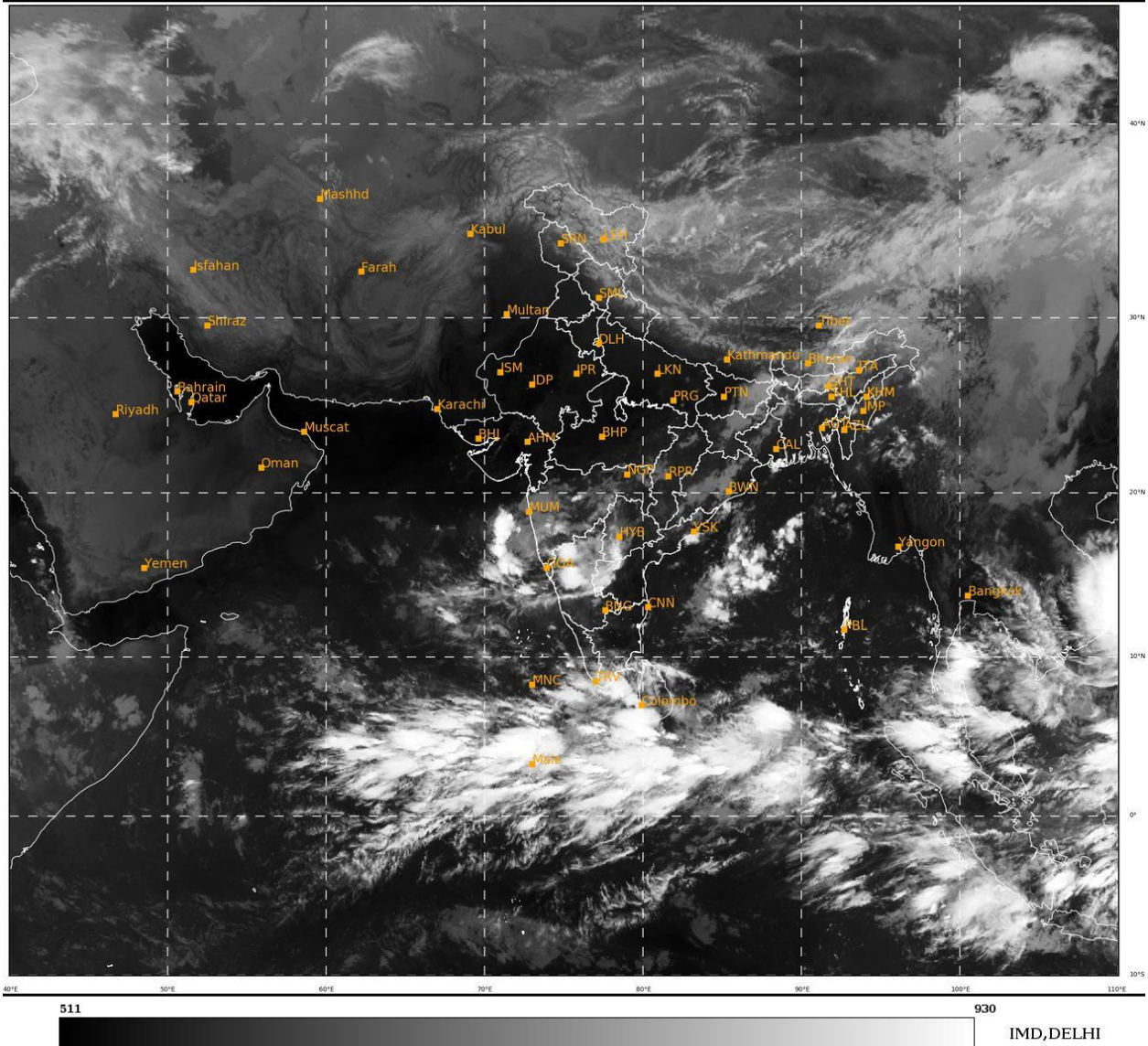
A CYCLONIC CIRCULATION LIES OVER EASTCENTRAL ARABIAN SEA OFF KONKAN-GOA COAST BETWEEN 3.1 & 5.8 KM ABOVE MEAN SEA LEVEL.

SCATTERED TO BROKEN LOW AND MEDIUM CLOUDS WITH EMBEDDED INTENSE TO VERY INTENSE CONVECTION LAY OVER EASTCENTRAL ARABIAN SEA OFF MAHARASHTRA COAST, SOUTHEAST ARABIAN SEA AND COMORIN AREA.

PROBABILITY OF CYCLOGENESIS (FORMATION OF DEPRESSION) DURING NEXT 120 HRS:

24 HOURS	24-48 HOURS	48-72 HOURS	72-96 HOURS	96-120 HOURS
NIL	NIL	NIL	NIL	NIL

Remarks: NIL



Cloud distribution: (a) Isolated: <25%, Scattered:25-50%, Broken: 51-75%, Solid:>75%, Convection Intensity: (a) Weak: Cloud Top Temperature (CTT) >-25°C, (b) Moderate: CTT: - 25°C to -40°C, (c) Intense: CTT: - 41°C to -70°C and (d) Very Intense: : Less than -70°C
PROBABILITY OF CYCLOGENESIS (FORMATION OF DEPRESSION):NIL: 0%, LOW: 1-33%, , MODERATE: 34-66% AND HIGH: 67-100%
This is a guidance Bulletin for WMO/ESCAP Panel Member countries. Visit respective National websites for Country specific Bulletins